

TECHINICAL SPECIFICATION MANUAL

GT 150



GRABBER TRACK TOOL



HIGH PERFORMANCE GAS POWERED TOOL

1 - TECHNICAL SPECIFICATIONS

A. GAS NAILER

Model No.	GTT150
Dimensions	
Length	15.74" (400 mm)
Width	4" (100 mm)
Height	14" (360 mm)
Weight	8.32 lbs (3.78 kg)
Magazine Capacity	40
Recommended Usage	1,000/Hr 5,000/Day

Noise

$L_{pA,1s}$	= 97 ± 2dB (A)
$L_{pC,peak}$	= 130 ± 2dB (C)
$L_{pA,1s}$	= 91 ± 2dB (A)
$L_{WA,1s}$	= 104 ± 2dB (A)

Vibration

The vibration/mechanical impact risk is low, it is the users' responsibility to ensure that the operators are not put at risk due to environmental and work piece specifications.

B. FUEL CELL

Model No.	GTTFUEL
Dimensions	
Height	152 mm
Capacity	1,000 shots

Fuel cell contains pre-mixed fuel and lubrication. No extra lubrication required.

Warning! Only specified Fuel Cell and Lubricant by Grabber Construction Products Fastening Systems can be used on the tools, please consult the Grabber Construction Products Fastening Systems agents or local distributors.

C. FASTENER

Dimensions	
Head Ø	.250" (6.3 mm)
Length	1/2" - 1-1/2" (13-38 mm)
Shank Ø	.102"-.120" (2.54-3.0 mm)
Applications	
Steel to Steel	.120" step
Steel Plate to Concrete	.102
Steel Plate to Hard Concrete	.120" step

Only those fasteners which are specified in this specification shall be used in Grabber Construction Products Fastening Systems Gas Tools. The Grabber Construction Products Fastening Systems Gas Tool and the fasteners specified are to be considered as one unit safety system.

The charger and the battery are designed to operate together as one system.

D. CHARGER

Model No.	GTCHR2
Input	100 - 240V~ 50/60Hz 25W Max.
Output	7.2V --- 2.0A
Charging Time	1 Hour
Battery Type	Grabber Construction Products B7220VL

E. BATTERY

Model No.	GTTBAT2
Type	Li-ion
Output	7.2V ---
Capacity	2.0Ah/14.4Wh, 2 cells

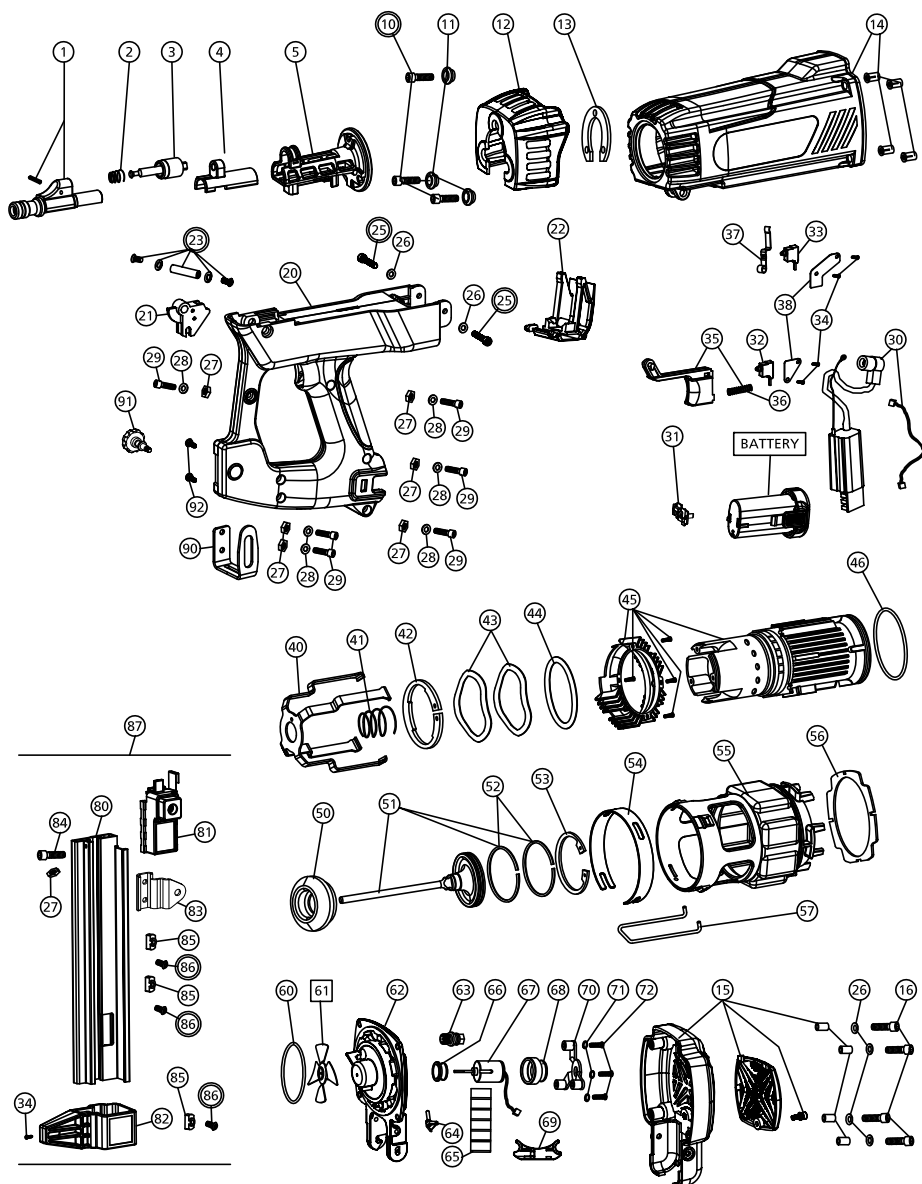
2 - TOOL SERIAL NUMBER

Located on the tool handle near the track connection.

02 YY MM 44 XXXX

YY	- Year of construction (last two digits)
MM	- Month of construction
XXXX	- Tool serial number

3 - PARTS LIST



POS.	CODE	DESCRIPTION
1	GB1ZF0	PIN GUIDE
2	GB1391	SPRING
3	GB140C	SPRING KNOB
4	GB142A	REAR SLEEVE
5	GB1411	NOSE PIECE
10*	GB1040	SOCKET SCREW
11	GB1050	BUSHING
12	GB1061	DUST SHIELD
13	GB1070	SHIELD SPACER
14	GB1Z10	HOUSING
15	GB1Z22	HEAD COVER
16	GB1780	SOCKET SCREW
20	GB1Z33	HANDLE
21	GB1130	FIRING CAM
22	GB1Z40	FUEL DOOR
23*	GB1Z50	BUSHING
25*	GB110A	SOCKET SCREW
26	GB1290	METAL WASHER
27	GB1170	LOCKNUT
28	GB1380	METAL WASHER
29	GB1370	SOCKET SCREW
30	GB1Z63	CONTROL UNIT
31	GB1181	ELECTRODE ASSEMBLY
32	GB1221	TRIGGER SWITCH
33	GB1311	MOTOR SWITCH
34	GB1270	SELF TAP SCREW
35	GB1Z71	TRIGGER WITH SPRING
36	GB1200	TRIGGER SPRING
37	GB1300	SWITCH LEVER
38	GB1261	SWITCH PLATE
40	GB1431	CAGE
41	GB1441	CAGE SPRING
42	GB1450	RETAINING RING
43	GB1470	WAVE WASHER
44	GB1480	VALVE WASHER
45	GB1Z90	CYLINDER ASSEMBLY
46	GB1520	CYLINDER O-RING
50	GB1530	BUMPER
51	GB1ZD0	PISTON WITH RING
52	GB1550	PISTON RING
53	GB1560	RETAINING RING

POS.	CODE	DESCRIPTION
54	GB1571	CIRCLIP
55	GB1581	COMBUSTION CHAMBER
56	GB1600	AIR DAM
57	GB1590	U-WIRE
60	GB1610	HEAD O-RING
61#	GB1620	BLADE ASSEMBLY
62	GB1630	CYLINDER HEAD
63	GB1650	SPARK PLUG
64	GB1660	FUEL NOZZLE
65	GB1670	MOTOR SLEEVE
66	GB1680	MOTOR BUMPER
67	GB1691	MOTOR
68	GB1700	MOTOR GUIDE
69	GB1642	CONNECTOR BOARD
70	GB1711	MOTOR HOLDER
71	GB1720	SPRING WASHER
72	GB1730	ROUND HEAD SCREW
80S	GB1792	TRACK 30
80L	GB1793	TRACK 40
81	GB1ZA1	FOLLOWER
82	GB1910	TRACK CAP
83	GB1801	TRACK CONNECTOR
84	GB1160	SOCKET SCREW
85	GB1810	TRACK NUT
86*	GB1820	SOCKET SCREW
87S	GB1ZC2	TRACK ASSEMBLY 30
87L	GB1ZC3	TRACK ASSEMBLY 40
90	GB170830	BELT HOOK
91	GB1144	LOCKING SCREW
92	GB1142	SELF TAP SCREW

#	Thread	#	Nut
10*	M5 x 25	27	M4
16	M5 x 30	85	M5
23*	M5 x 14		
25*	M5 x 14	#	Washer
29	M4 x 16	23	12mm
34	Z3 x 10	26	10mm
54*	M5 x 8	28	9mm
72	M4 x 20	71	M4
84	M4 x 8		
86*	M5 x 8		
*	LOCTITE BLUE		
#	LOCTITE RED		