

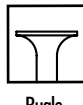
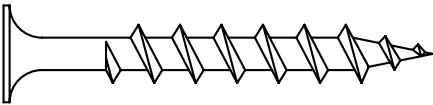
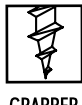
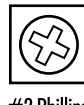
INTERIOR WOOD

Product #2301

Bugle Head GRABBER® - Interior (1 OF 3)

Attaches gypsum board to wood. Extra sharp point and threads make driving easier and provide better holding power.

Finish - Black/Gray Phosphate, Yellow Zinc and Clear Zinc

Bugle
HeadGRABBER
Point#2 Phillips
Drive**APPLICATIONS**

- ▶ 3/8", 1/2", and 5/8" single-layer gypsum board to wood studs and joists
- ▶ 1/2" and 5/8" double-layer gypsum board to wood studs and joists
- ▶ Insulation to wood
- ▶ OSB or plywood to wood
- ▶ Wood to wood applications

SPECIFICATIONS

- ▶ Gauge – #6 to #10
- ▶ Lengths – 1" to 4"
- ▶ Head Type – Bugle
- ▶ Recess Type – #2 Phillips
- ▶ Thread Type – Single Lead
- ▶ Finish – Gray Phosphate. Also available in Yellow Zinc and GRABBERGARD®
- ▶ GRABBER® screws are manufactured in an ISO 9001 and ISO 14001

PRODUCT FEATURES

- ▶ Superior holding power and ease of penetration
- ▶ A coarse thread screw for general interior applications
- ▶ 8 threads per inch
- ▶ Extra sharp, single lead 23° GRABBER point, designed to penetrate quickly and easily
- ▶ #2 Phillips recess drive

INSTALLATION GUIDELINES

- ▶ Use a standard screwgun with a depth-sensitive nose piece. Suggested screwgun specification for optimal performance – 4 amps minimum and 2500 RPM.
- ▶ The Bugle head is fully seated when the head is flush with the work surface.
- ▶ Overdriving may result in failure of the fastener or stripout of the work surface.
- ▶ For wood to wood connections, minimum penetration should be 7 diameters (e.g. 1-1/4" for #8 fastener)

INTERIOR WOOD

Product #2301

Bugle Head GRABBER® - Interior (2 OF 3)

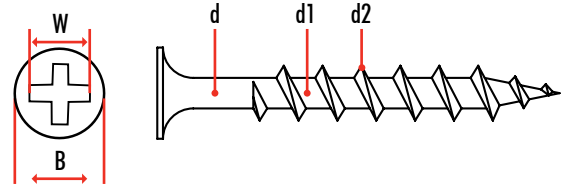
PRODUCT SIZES AND ORDERING INFORMATION

Catalog No.	Gauge/Length	Length Metric	Quantity Per Carton	Weight Per Carton
100YZ	#6x1"	25 mm	10 M	30.00(lbs)
100Z	#6x1"	25 mm	10 M	29.00(lbs)
100	#6x1"	25 mm	10 M	29.00(lbs)
300	#6x1-1/4"	32 mm	8 M	30.00(lbs)
300YZ	#6x1-1/4"	32 mm	8 M	33.00(lbs)
300Z	#6x1-1/4"	32 mm	8 M	33.00(lbs)
200Z	#6x1-1/8"	28 mm	10 M	32.00(lbs)
200	#6x1-1/8"	28 mm	10 M	30.00(lbs)
400YZ	#6x1-5/8"	41 mm	5 M	22.00(lbs)
400Z	#6x1-5/8"	41 mm	5 M	22.00(lbs)
400	#6x1-5/8"	41 mm	5 M	22.00(lbs)
500YZ	#7x2"	51 mm	3.5 M	22.00(lbs)
500Z	#7x2"	51 mm	3.5 M	21.00(lbs)
500	#7x2"	51 mm	3.5 M	21.00(lbs)
600	#7x2-1/4"	57 mm	3 M	20.00(lbs)
600Z	#7x2-1/4"	57 mm	3 M	20.00(lbs)
900	#8x2-1/2"	63 mm	2.5 M	19.00(lbs)
900YZ	#8x2-1/2"	63 mm	2.5 M	25.00(lbs)
900Z	#8x2-1/2"	63 mm	2.5 M	25.00(lbs)
1100YZ	#8x3"	76 mm	2 M	22.00(lbs)
1100Z	#8x3"	76 mm	2 M	22.00(lbs)
1100	#8x3"	76 mm	2 M	21.00(lbs)
1200	#10x3-1/2"	89 mm	1 M	17.00(lbs)
1300	#10x4"	102 mm	1 M	20.00(lbs)
1300Z	#10x4"	102 mm	1 M	20.00(lbs)

*1lb Box, 5lb Box and Collated screw packaging option available on selected items.

STANDARD CORROSION TEST RESULTS

Finish	Test	Standard/Protocol	Results
Black/Gray Phosphate	Salt Spray Results	ASTM B117	24 hours, No Red Rust
Yellow Zinc	Salt Spray Results	ASTM B117	48 hours, No Red Rust
Clear Zinc	Salt Spray Results	ASTM B117	24 hours, No Red Rust



All GRABBER® screw products are manufactured in facilities that are ISO 9001 certified. The fasteners comply with ASTM C1002 performance requirements. ©2012 GRABBER Construction Products, Inc. GRABBER®, STREAKER®, DRIVALL®, LOX®, GRABBERGARD® and SCAVENGER® are registered trademarks of Grabber Construction Products, Inc.



INTERIOR WOOD

Product #2301

Bugle Head GRABBER® - Interior (3 OF 3)

PRODUCT DIMENSIONS (MILLIMETERS)

Gauge	B Head Dia	Recess Depth	W Gauging Width	d Shank Dia	d1 Minor Dia	d2 Major Dia	TPI
#6	8.00	0.50	#2	2.68	2.25	3.75	8
	8.50	0.80		2.72	2.45	3.95	
#7	8.00	0.50	#2	2.93	2.50	4.05	8
	8.50	0.80		2.97	2.80	4.30	
#8	8.00	0.50	#2	3.18	2.80	4.30	8
	8.50	0.80		3.22	3.10	4.60	
#10	8.50	0.50	#2	3.78	3.20	5.00	8
	8.90	0.80		3.82	3.50	5.30	

PULL-OUT TEST DATA

Screw Gauge	2x2 Douglas Fir	2x4 Redwood	1x3 Clear Pine	1" Plywood	3/4" Particleboard
#6	339	309	186	222	224
#7	430	258	291	250	227
#8	528	500	396	246	324
#10	545	320	332	312	255

All GRABBER® screw products are manufactured in facilities that are ISO 9001 certified. The fasteners comply with ASTM C1002 performance requirements. ©2012 GRABBER Construction Products, Inc. GRABBER®, STREAKER®, DRIVALL®, LOX®, GRABBERGARD® and SCAVENGER® are registered trademarks of Grabber Construction Products, Inc.

