

THE GRABBER SUPERDRIVE® MACH1™

THE COLLATED FASTENER SOLUTION FOR STEEL FRAMING

In steel framing construction, precision and speed are critical. Every second counts and that's where the Grabber SuperDrive® Mach1™ comes in.

The SuperDrive Mach1 is the first collated system truly designed to meet the demands of onsite and offsite steel framing construction, offering unparalleled speed, precision, and efficiency. It's the perfect solution for professionals who are looking to enhance productivity, improve installer safety and reduce material waste.



FASTER

With the SuperDrive Mach1, you'll be able to drive screws quickly and with precision without the need to constantly load individual screws. This means less time spent on screws handling and more time spent on the job, increasing your productivity and profitability

**BUILT FOR SPEED;
TESTED TO BE 5X FASTER
THAN BULK SCREWS**

SAFER

One of the major causes of injury associated with steel framing is the repetitive motion of handling and driving individual screws. The SuperDrive Mach1's collated fastener system and lightweight, ergonomic design reduces the amount of time spent on screw handling, making it a safer option for professionals who use it on a regular basis. That means crews can keep working, safely and efficiently.

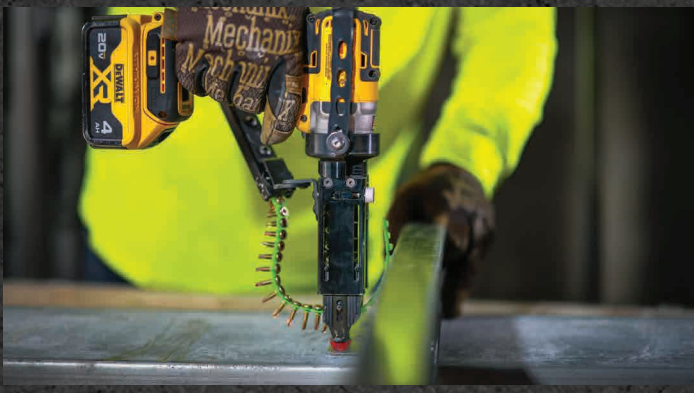
FEWER LOST SCREWS

With the SuperDrive Mach1 there is no need to handle individual screws, which can be easily dropped or lost. This means less risk of lost screws, which result in wasted time and materials, ultimately leading to increased costs. With the SuperDrive Mach1, you can rest assured that your materials are being used efficiently and effectively.

PART OF A HISTORY OF INNOVATION

A leader in construction technology and innovation, and the inventor of the first collated fastener system, Grabber has a long history of providing cutting-edge solutions that meet the evolving needs of construction professionals. You can trust that the SuperDrive Mach1 is no exception. Like all Grabber products, it has been designed with your needs in mind and built to the highest standards to provide a reliable and effective solution for your steel framing construction projects.





FEATURES

- | | |
|---------------------------------|-----------------------------------|
| No Slip Tip | Quick removal strap |
| Reversible (R or L) feed track | Compact and durable design |
| SureLock™ Fine Depth Adjustment | 7/16" - 7/8" screw length options |
| Coupler allows LED pass-through | |

PERFECT FOR:

- | | |
|----------------------------|--------------------------|
| Stud and track connections | Cripple stud connections |
| Ridge connections | Resilient channel |
| Flat strapping | Bracing, blocking, clips |
| Web stiffeners | Inline framing |
| Box beam headers | |

WHY IS THE GRABBER SUPERDRIVE MACH1 THE RIGHT COLLATED SOLUTION FOR FRAMING CONTRACTORS?

- Multiple screw and tool options
- Efficient arm and hand motion
- Consistent positioning and leverage
- Increases speed & productivity
- Fewer wasted screws (drops)
- Accelerates training for apprentices

WHY CHOOSE GRABBER SUPERDRIVE TOOLS?

- Innovator and leader of collated fastening systems
- The highest quality
- Works with DeWalt, Makita and Milwaukee impact drivers

Part Numbers:

Attachments

DeWalt part number: SDIM1D
 Makita part number: SDIM1M
 Milwaukee part number: SDIM1ML1 (Impact driver 2853)
 Milwaukee part number: SDIM1ML2 (Impact driver 2953)

WHY CHOOSE GRABBER FASTENERS?

- Quality wire, consistent recess, sharp threads
- Lox® Drive has 8 points of contact for additional bit engagement
- Sharp Point or Self Drill options

Bits

Philips: CF124 (Works with C23V & C34DZ collated screws)
 Lox: CF124LN (Works with CFP collated screws)

