

OPERATING INSTRUCTIONS FOR SUPERDRIVE® MACH1™

SAFETY NOTES:

1. Be sure the battery is removed prior to replacing a bit or making other adjustments or repairs.
2. Stay alert, use common sense, and securely grip tool handle while driving screws and replacing collated strips. Use personal protective equipment.
3. Never use tool while standing on an unstable platform.
4. Never point the driver at yourself or others in the work area.
5. Avoid wearing loose clothing, jewelry or other items that could become caught in the tool.
6. Make sure bit is clear of clothing, hair or other loose items while operating the tool.
7. Make sure the battery is removed before performing any adjustment or repair to the indexing module.
8. Always use collated screws and strips that are designed for this tool. See Technical Data below.

TECHNICAL DATA:

1. MACH1 is designed for #6-#12 screws only.
2. Use MACH1 with screw lengths from 1/2-in (12.7mm) - 7/8 in (22.2mm) only.
3. MACH1 is designed for fastener head diameters up to 3/8-in (9.3mm).
4. Only use bits with a 3/16-in (5mm) shank diameter with MACH1.
5. MACH1 is designed to work best with CF124 and CF124LN bit tips.

Setting up MACH1:

1. Choose bit to use.



A. LOX 2, CF124LN



B. #2 Phillips, CF124



OPERATING:

2. Fully insert Bit into driver



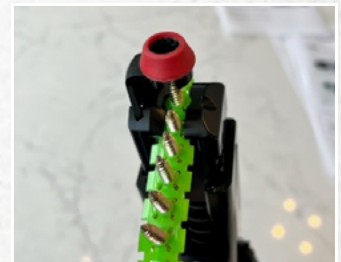
3. Adjust feed track to preferred side of tool by loosening adjustment screw shown here. Once the feed track is in preferred configuration, retighten adjustment screw.



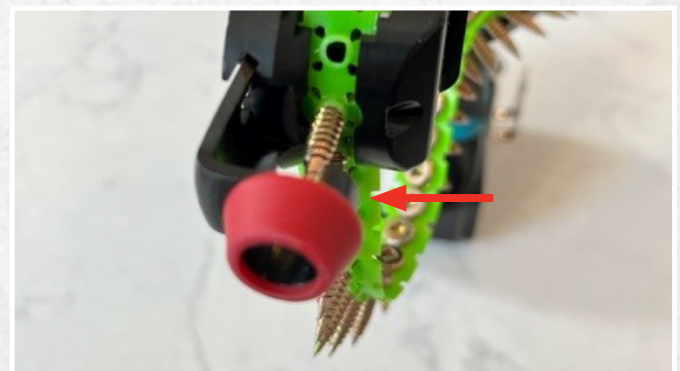
4. Place SuperDrive head on tool ensuring that bit slides into and through the Indexing Module straight. Then pull strap around the back of the tool



5. Insert a collated strip of screws into the feed track. Then feed the strip from the feed track into the indexing module.



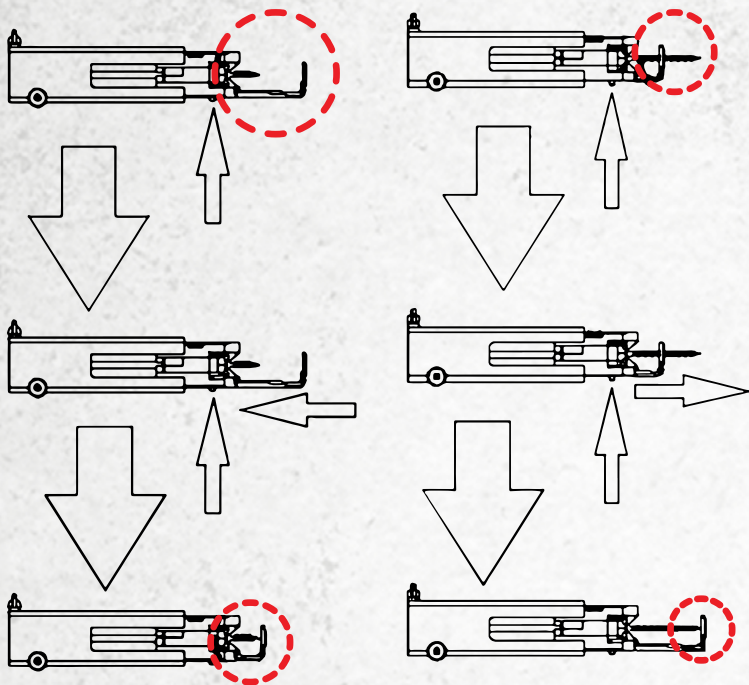
6. Position the first screw in the strip directly under the bit tip guide. Collated strip and screws will advance on retraction.



ADJUSTING FOR FASTENER LENGTH (Coarse adjustment):

Press button on the nose piece attachment to release the nose piece. The nose piece can then be slid up or down to accommodate a new fastener length.

Release the button to lock the nose piece in the new position.



SUGGESTIONS FOR OPERATION:

- For best results position tool at a right angle to the work surface as much as is possible.
- Allow the driver to fully spin up before pressing tool to the substrate surface.
- Press tool to the substrate maintaining even and consistent pressure until the faster is fully driven in.
- Check fastener depth and make any necessary fine adjustment.
- Keep the driver fully spun up as subsequent screws are driven.

FINE DEPTH ADJUSTMENT:

Twist the knurled wheel at the top of the indexing module to make fine depth adjustment. An adjustment scale and guide are located on the top of the tool.

